

Customer Name: _____ Phone: _____ Date of Drawing: _____ Material: _____

Order
Approved by _____
Date: ____/____/____

Remember that the small squares are 3 inches and the large squares equal 1 foot.

Customer Signature confirms that all cabinetry and mounting surfaces have not been altered since time of template. Customer also confirms that all information listed above is accurate. This build sheet represents the entire scope of work. Sinks will be mounted to conform to sink manufacturer's recommended reveal. Order is considered final with the acceptance of the information contained in this document. Soni Interiors terms and conditions apply to this and all projects. Once cabinets or granite is ordered and is fabricated no changes can be done or materials can be returned or exchanged. Any changes will be charged extra. Your initials are required on the attached drawing in order to begin production of your job. Please confirm that this is your order in its entirety, any addition or changes will delay your job in its entirety. Seam locations and placement of cabinets are determined by fabricator and installer based on manufacturing requirements and space limitations. Seam in the backsplash may not line up with seam in the countertop. Cabinets or plumbing may have to be modified for sink to fit properly. Fillers might be needed to complete the measurement of cabinets. Cabinet sizes can be changed if they are not available in this design to fit the space.

A guide to planning and creating the heart of your home

Accurate measurements as indicated in the measuring procedure are the key elements we will need to plan your new kitchen. If you can come to our Store with the draft Measurement and with this information, our kitchen specialists will be able to help design the kitchen of your dreams.

FLOOR PLAN

Before any planning can start we must know the exact dimensions available to work with. Using the measuring procedure illustrated, carefully prepare a simple floor plan of your existing kitchen. Your completed floor plan should resemble the diagram shown below. Make sure you show exact locations of doors, windows, hood vents, exhaust, gas line, water line, drains, switches, outlets, light fixtures, and heat vents. Double check all measurements.

MEASURING PROCEDURE

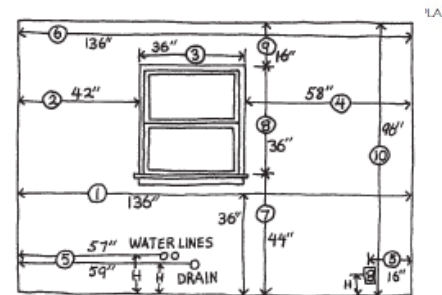
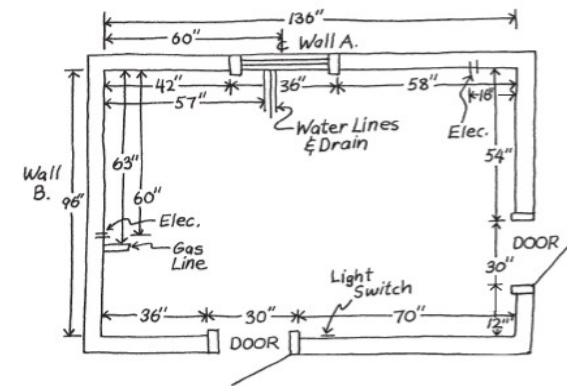
Using a tape measure and graph paper, measure as outlined below.

Horizontal Measurement

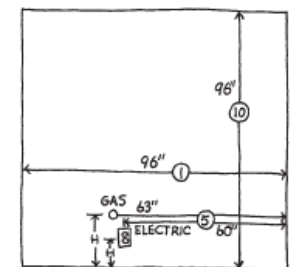
1. Measure from wall to wall at 36" height.
2. Measure from corner to window or door opening.
3. Measure across opening from trim edge to trim edge.
4. Measure from edge of trim to far wall. Compare sum of #2, #3 and #4 measurements to step #1.
5. Mark exact location of water, drain, gas lines and electrical outlets and switches on drawing.
6. Measure from wall to wall above window and compare to #1.

Vertical Measurement

7. Measure from floor to window sill.
8. Measure from window sill to top of window.
9. Measure from top of window to ceiling.
10. Measure from floor to ceiling – Compare to sum of #7, #8 and #9.
11. Remember to indicate all permanent appliances like stove, fridge, Dishwasher, Oven, microwave oven, etc.

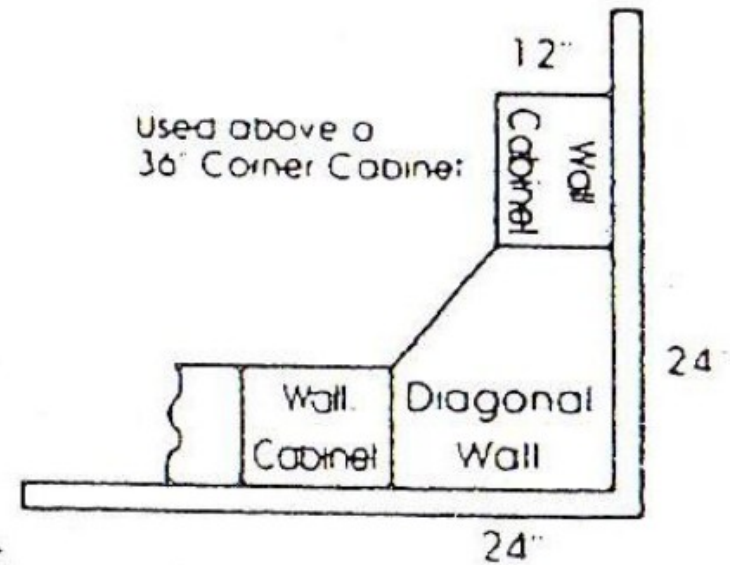
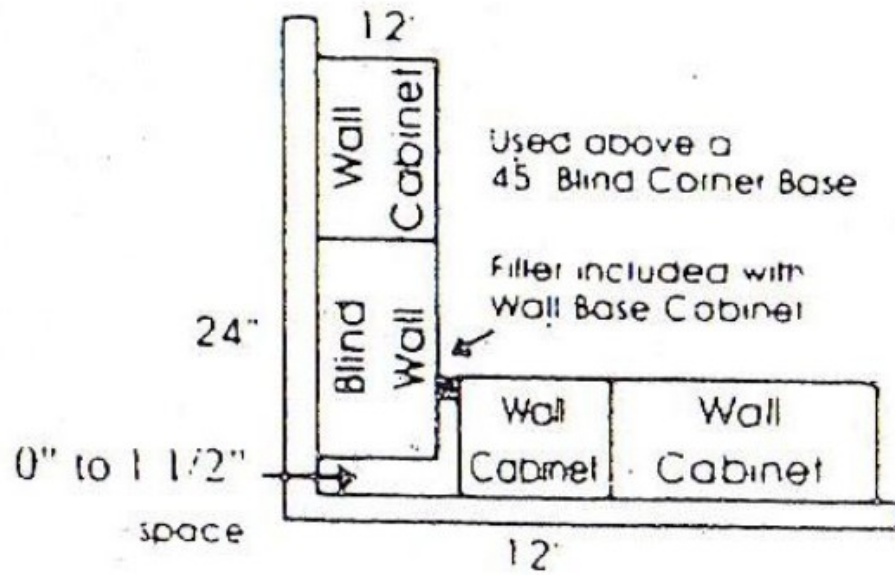
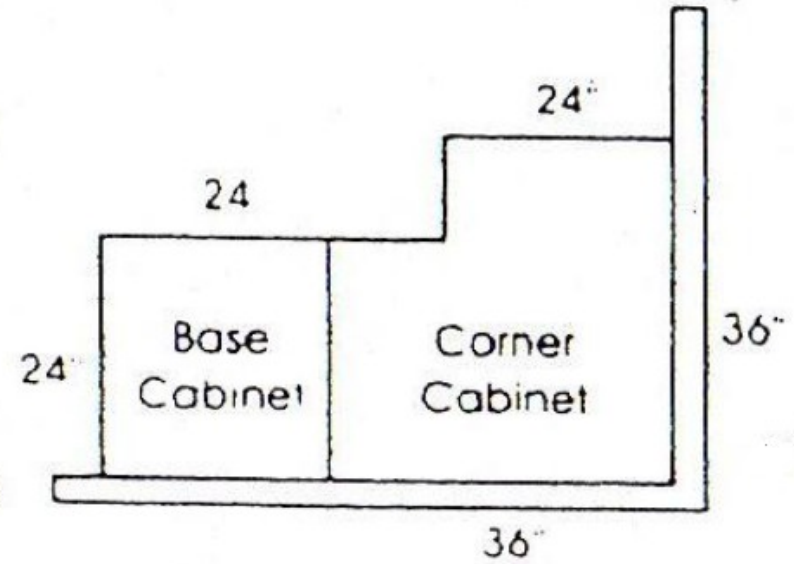
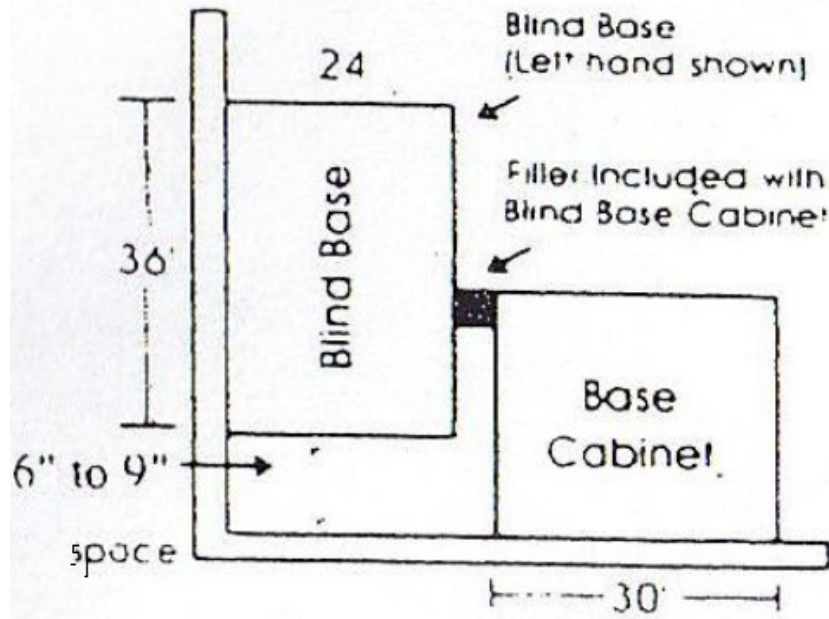


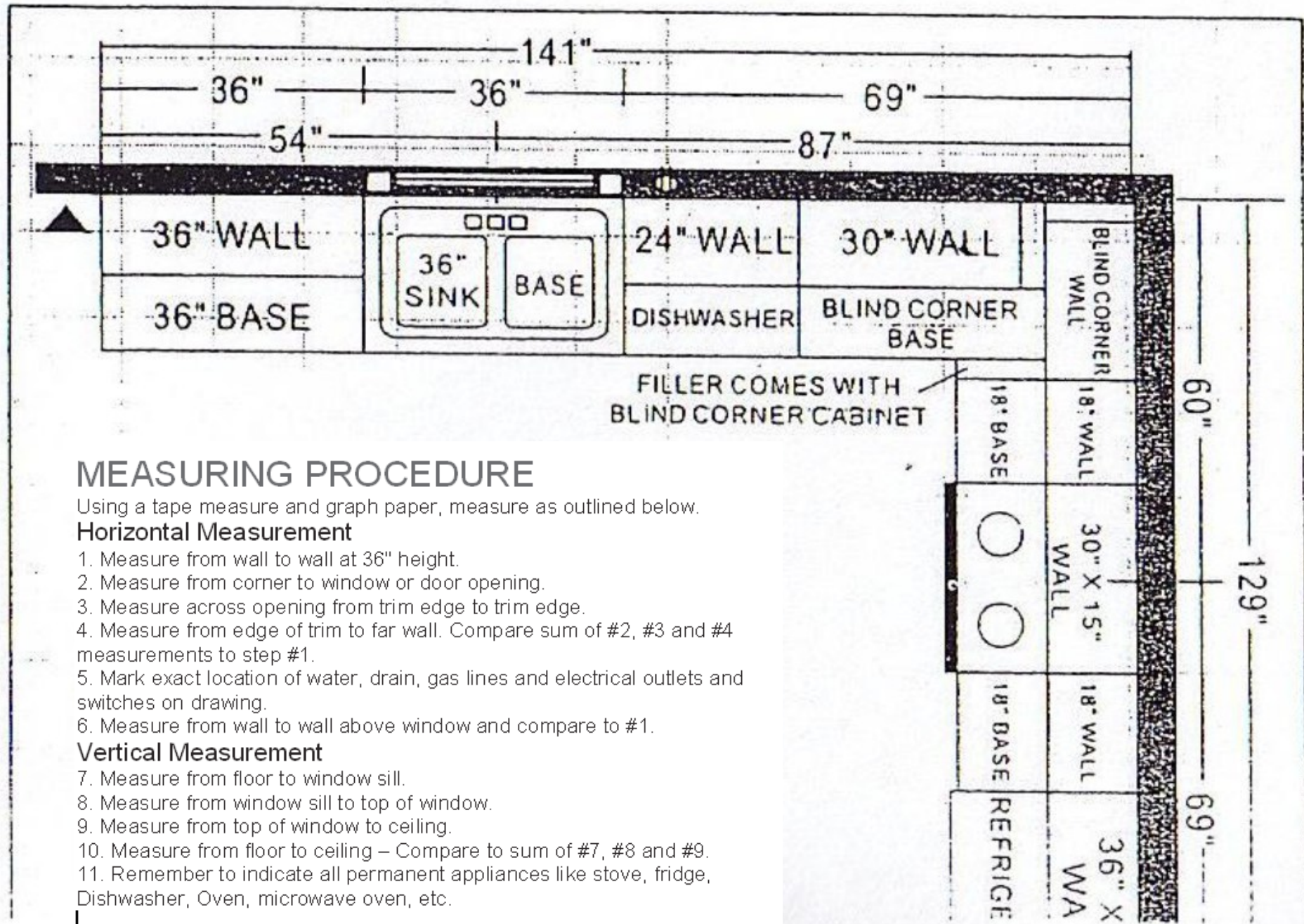
WALL A



WALL B

Corner Layout Ideas (Over Head Views)





MEASURING PROCEDURE

Using a tape measure and graph paper, measure as outlined below.

Horizontal Measurement

1. Measure from wall to wall at 36" height.
2. Measure from corner to window or door opening.
3. Measure across opening from trim edge to trim edge.
4. Measure from edge of trim to far wall. Compare sum of #2, #3 and #4 measurements to step #1.
5. Mark exact location of water, drain, gas lines and electrical outlets and switches on drawing.
6. Measure from wall to wall above window and compare to #1.

Vertical Measurement

7. Measure from floor to window sill.
8. Measure from window sill to top of window.
9. Measure from top of window to ceiling.
10. Measure from floor to ceiling – Compare to sum of #7, #8 and #9.
11. Remember to indicate all permanent appliances like stove, fridge, Dishwasher, Oven, microwave oven, etc.